

Assembly instructions HEATKILLER® GPU-X² GTX285V2



The HEATKILLER® GPU-X² G285-V2 guarantees the highest degree of cooling power. The unique design ensures maximum performance on a level with current high-end CPU cooler. Extremely fine microstructures cool both graphic processors very effectively. All other relevant components (e.g. RAM, NVIO, VRM) are also cooled.

The top and bottom part is highly pure electrolyte copper.

| | |
|-----------------------------|---------------------------------------|
| Dimensions (LxWxH): | 208,0 x 118,0 x 12,5mm |
| Weight | 750g |
| Material (base/center part) | CU / CU |
| Material (inlay) | Stainless steel |
| Connections | G ¼ inch |
| Temperature-resistant up to | 80°C |
| Compatible with | NVIDIA GEFORCE GTX285 PCB-Version 892 |

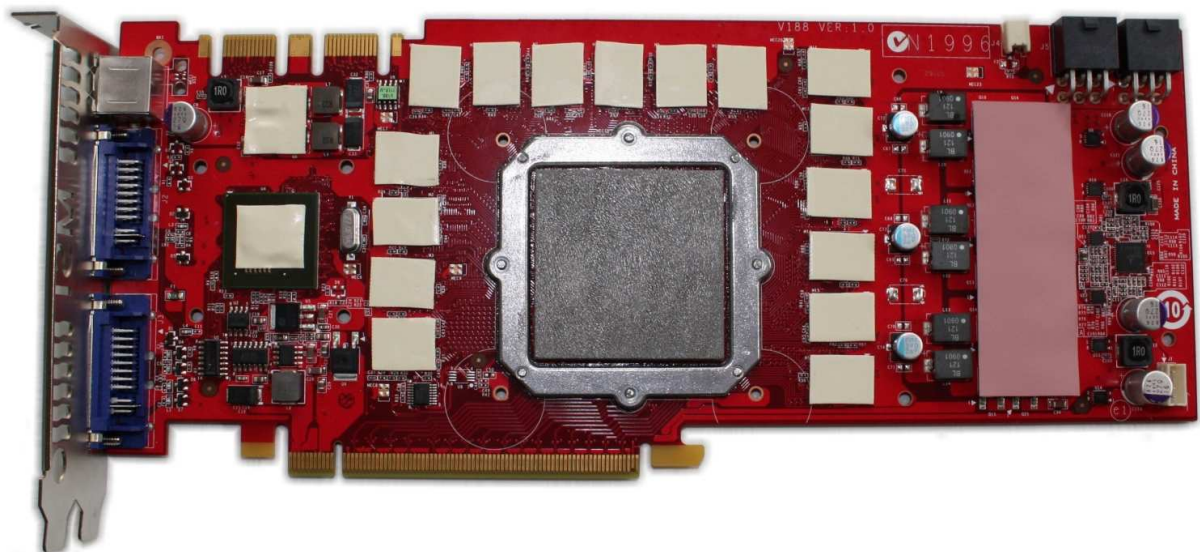
Notice: A coloured installation manual in PDF format is available in the service section of our homepage at www.watercool.de

Attention: Conversion at your own risk. Non-observance of the installation instructions may damage the graphic board. Watercool will assume no liability for damage to the hardware. In case of uncertainties, please engage an expert for the conversion or use our conversion service. Dismantling the original cooler may lead to the loss of the manufacturer's warranty. In case of uncertainty, please contact the manufacturer of the graphic board.

Preparing the graphic board

Remove the original CPU fan as well as all remnants of the heat conductor pad. Place the pre-cut pads on the graphic board as shown in the illustration. The 1mm thick pad is intended for the VRM chips on the right side of the board. The blue protective foil has to be removed prior to installation; the white side of the pad is placed on the VRM chips.

The RAM modules, the NVIO and the voltage converters on the left have to be fitted with the 0.25 mm thick pads (red). There is a protective foil on these pads, which has to be removed prior to installation. Apply heat-conductive paste evenly on the GPU section.

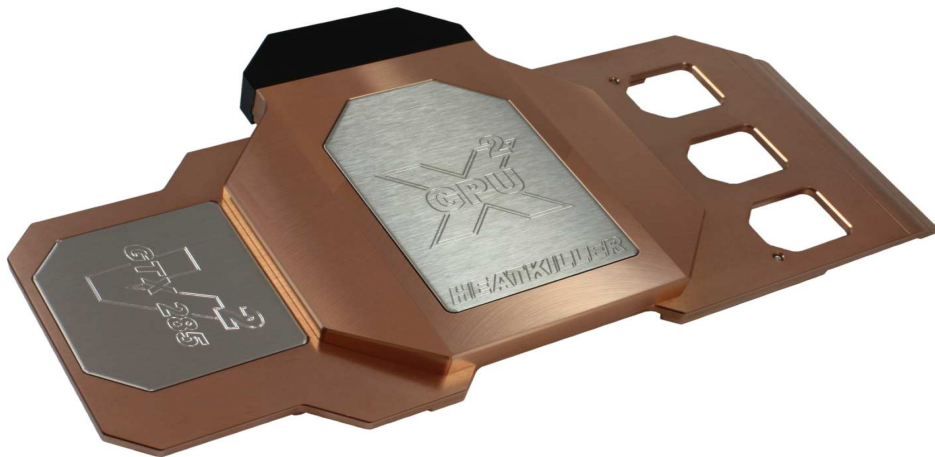


Installation of the cooler

The cooler is placed on the prepared graphics board. Then turn the board around together with the cooler. All enclosed screws are now screwed in manually in the cooler together with the enclosed washers.

The GPU section is installed with 4 x M2.5 screws and washers. In the range of the voltage transformer and the NVIO, use 4 x M3 screws and washers.

Once all screws are placed in the cooler, you can tighten them slightly. To do so, tighten the screws in a cross-diagonal pattern in the GPU section. Then slightly tighten the screws in the range of the voltage transformer and the NVIO.



Installation and leak test

After the installation, a check and test run must be performed! The coolers are constructed on the reference design; still, all sections of the board have to be checked for possible contact to the cooler. In addition, the contact of the GPU to the cooler must be checked along with the bending of the board. A slight bending of the board is normal.

A leak test should preferably be performed outside of the computer. If this is not possible, the hardware may not be turned on during the test run!

Once all of the cooler elements were tested, the computer can be put into operation. Check the temperature of the CPU immediately after the start!

General information

The HEATKILLER® GPU-X² GTX285-V2 has a defined input/output. The port on the left (pointing towards the slot cover) is the input. The output is located on the right, and the connections can be installed either on the top or the bottom.

We recommend using demineralised or deionised water (distilled water) as cooling medium. To prevent the build-up of algae, use common citric acid, which reliably prevents the spread of algae.

HEATKILLER® are manufactured by

WATERCOOL®
quality cooling equipment

Watercool e.K
Warendorfer Strasse 20
D-17192 Waren
GERMANY

Tel: (+0049) 03991-187601
Fax: (+0049) 03991-187602

E-Mail: info@watercool.de
Web: www.watercool.de

Please send your questions, suggestions or criticism to the following address: